

1 UPS 25-120 180



52588336

PES/PP.

1-

: -25 .. 95 °C
 : 60 °C
 : 983.2 / 3

TF

: 95
 : AAA

EN-JL1030
 ASTM 30 B
 , PES/PP

.T

80 0C: 80 °C

: 10
 : G 1 1/2
 : PN 10
 : 180

C

6

1: 120

2: 180

: 235
 : 50 Hz
 : 1 x 230 V

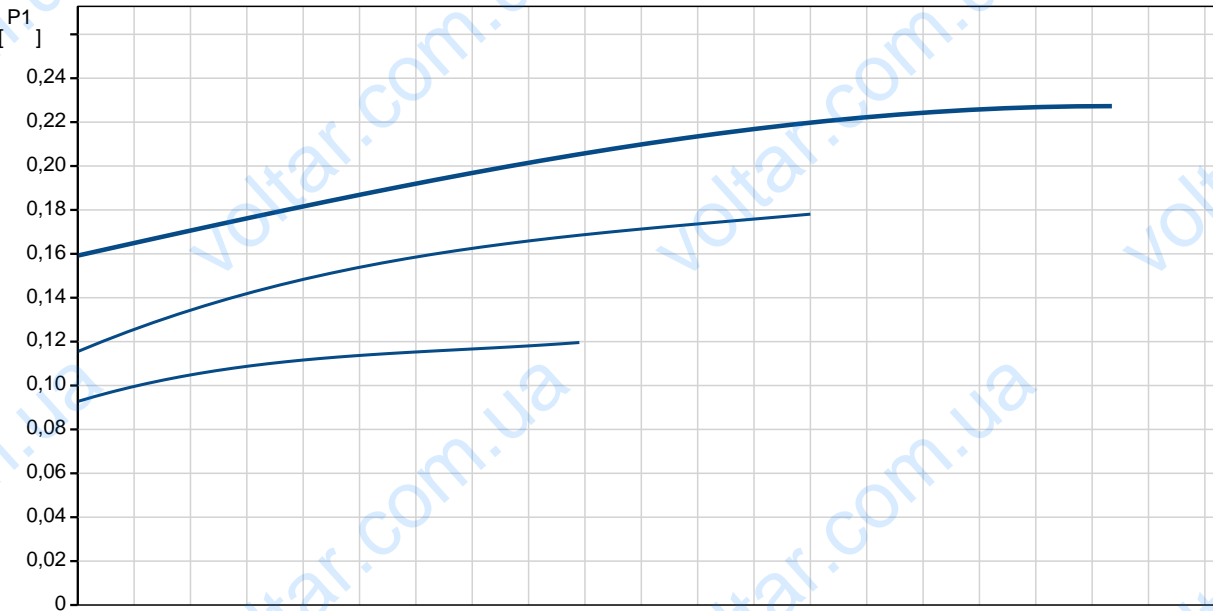
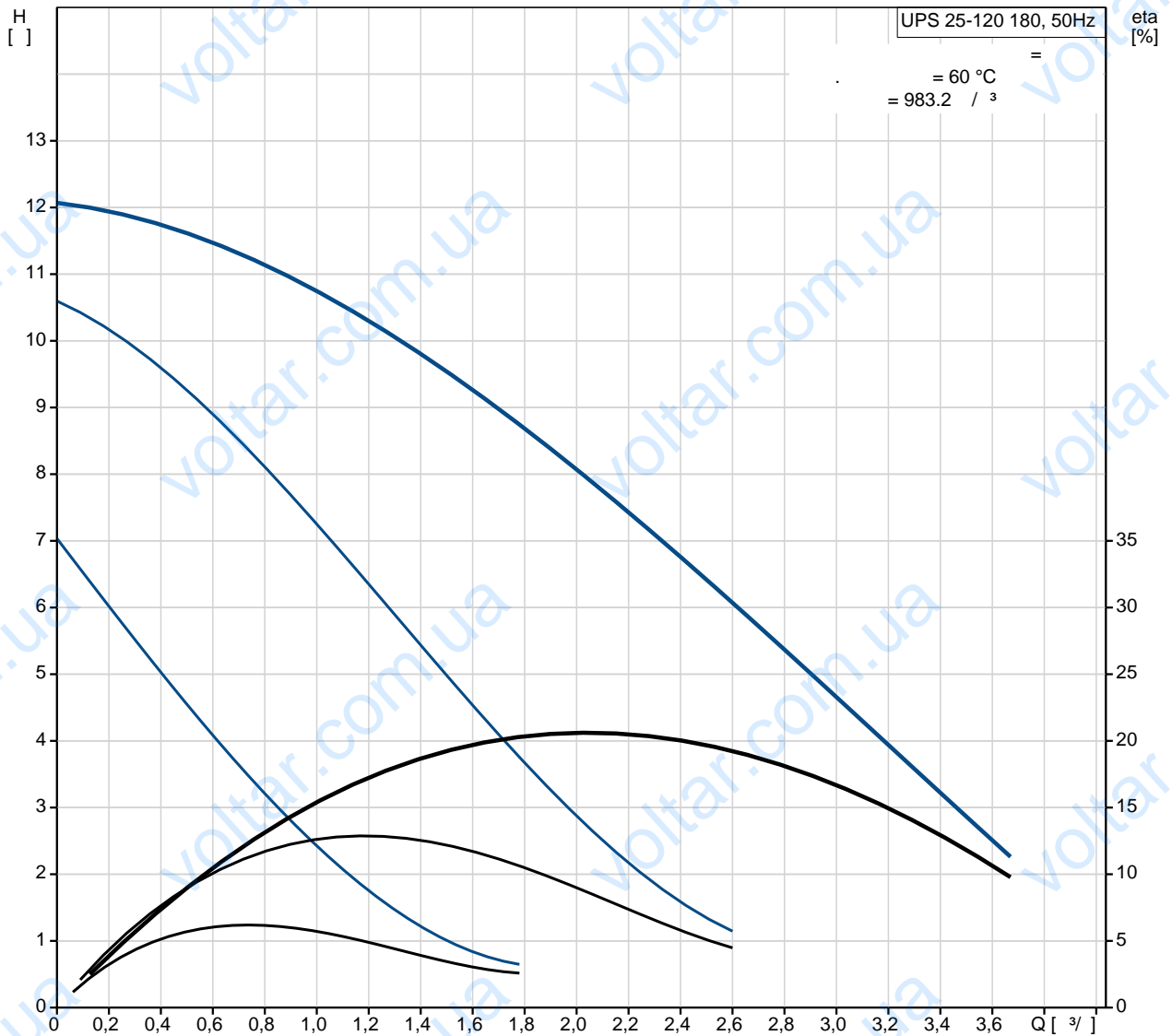
1: 0.53 A
 2: 0.78 A

3: 1.02 A

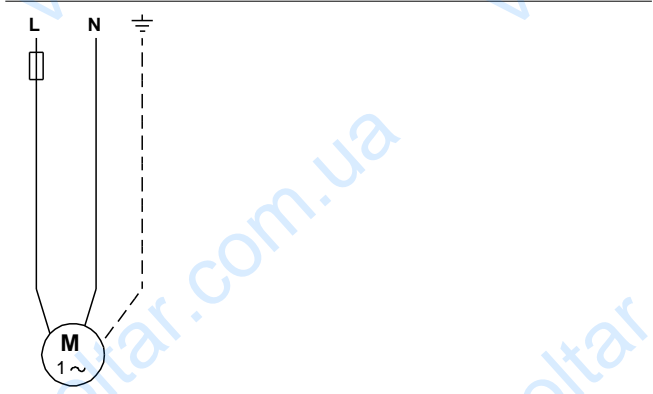
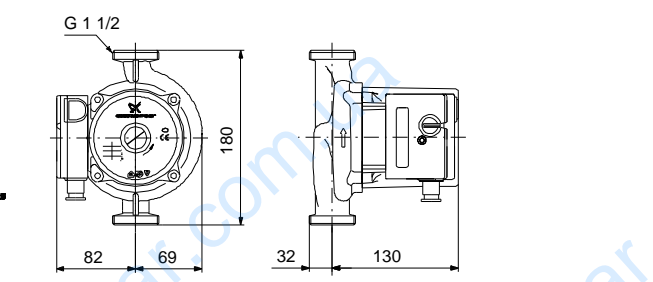
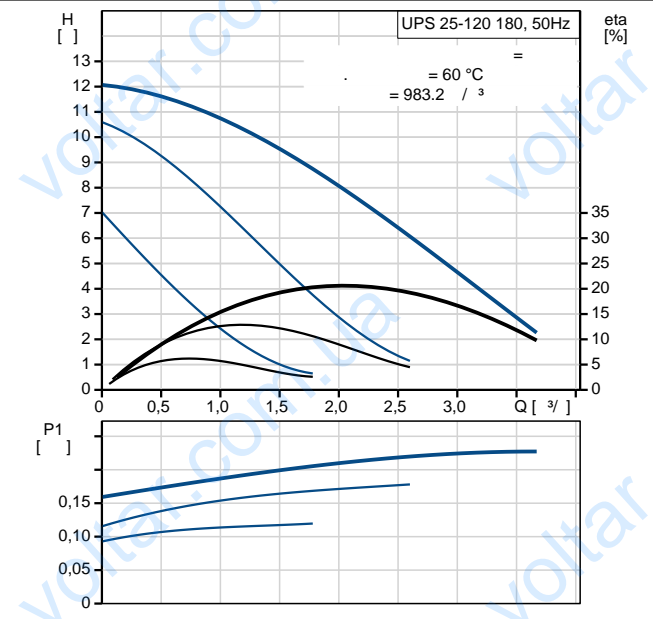
- : 6
 (IEC 34-5): X2D
 (IEC 85): F

:
 : 4.4
 : 4.6
 : 0.006³

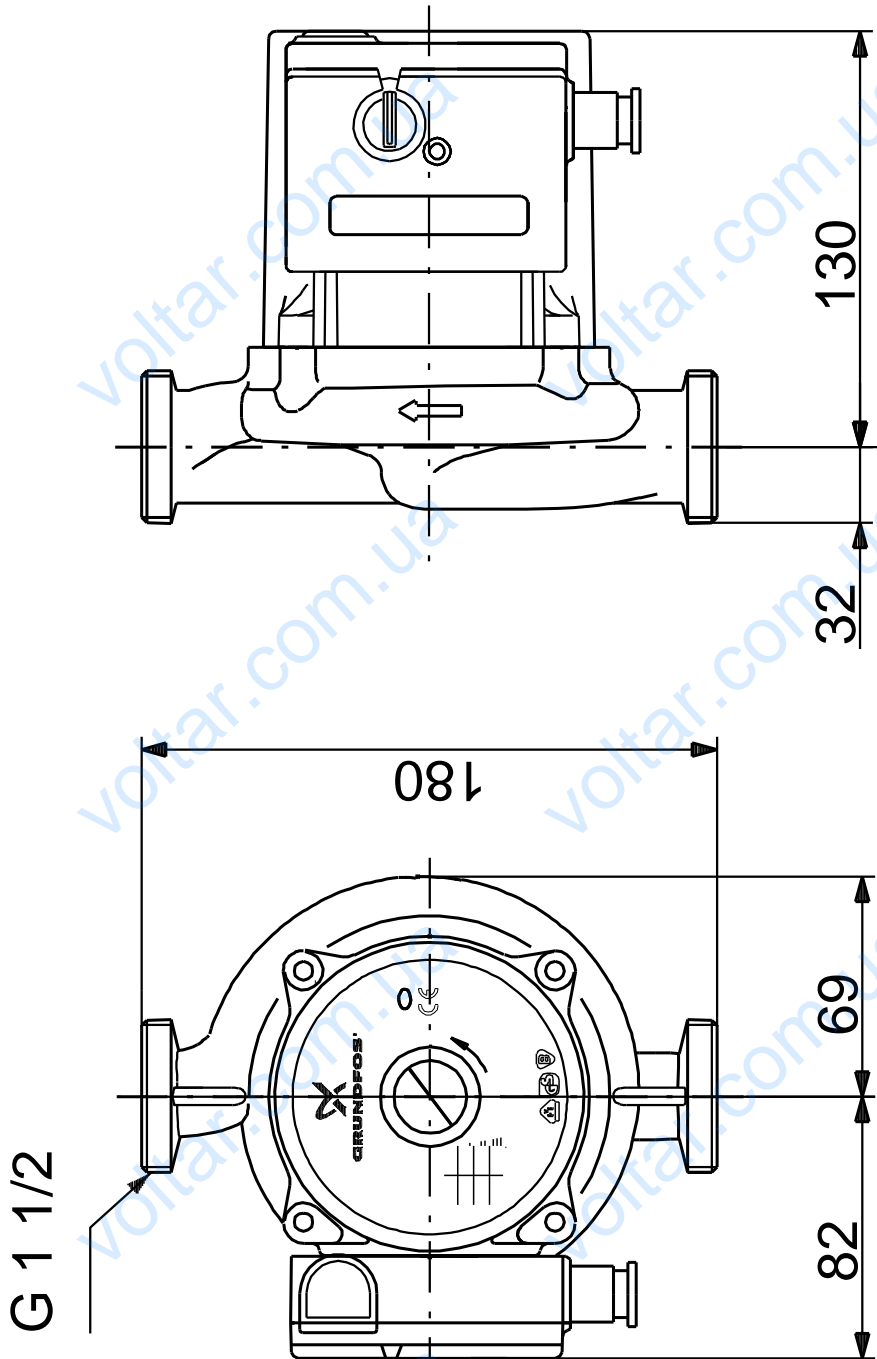
52588336 UPS 25-120 180 50



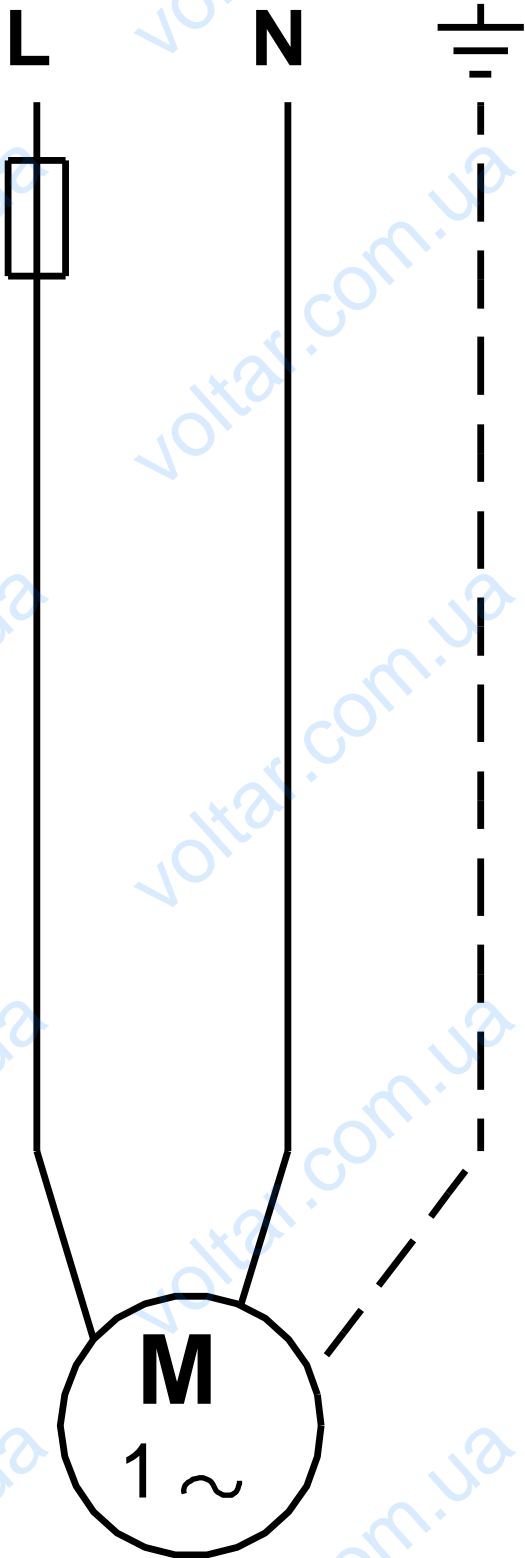
UPS 25-120 180	
EAN	52588336
	5700394227377
TF	3
	120
	95
	AAA
	EN-JL1030
	ASTM 30 B
	, PES/PP
T	80 °C
80 OC:	10
	G 1 1/2
	PN 10
	180
	-25 .. 95 °C
	60 °C
	983.2 / ³
C	6
	1: 120
	2: 180
	235
	50 Hz
	1 x 230 V
	1: 0.53 A
	2: 0.78 A
	3: 1.02 A
	6
(IEC 34-5):	X2D
(IEC 85):	F
	CONTACT
	9H
	4.4
	4.6
	0.006 ³



52588336 UPS 25-120 180 50



52588336 UPS 25-120 180 50



! [] .