

1 ALPHA2 25-60 130



GRUNDFOS ALPHA2

ALPHA2 - Grundfos.

ALPHA2

, AUTOADAPT. ALPHA2

, ALPHA2

«A»

AUTOADAPT

, AUTOADAPT,

. AUTOADAPT

80 %

ALPHA2

Grundfos.

«A»

ALPHA2 %

. ALPHA2 «D».

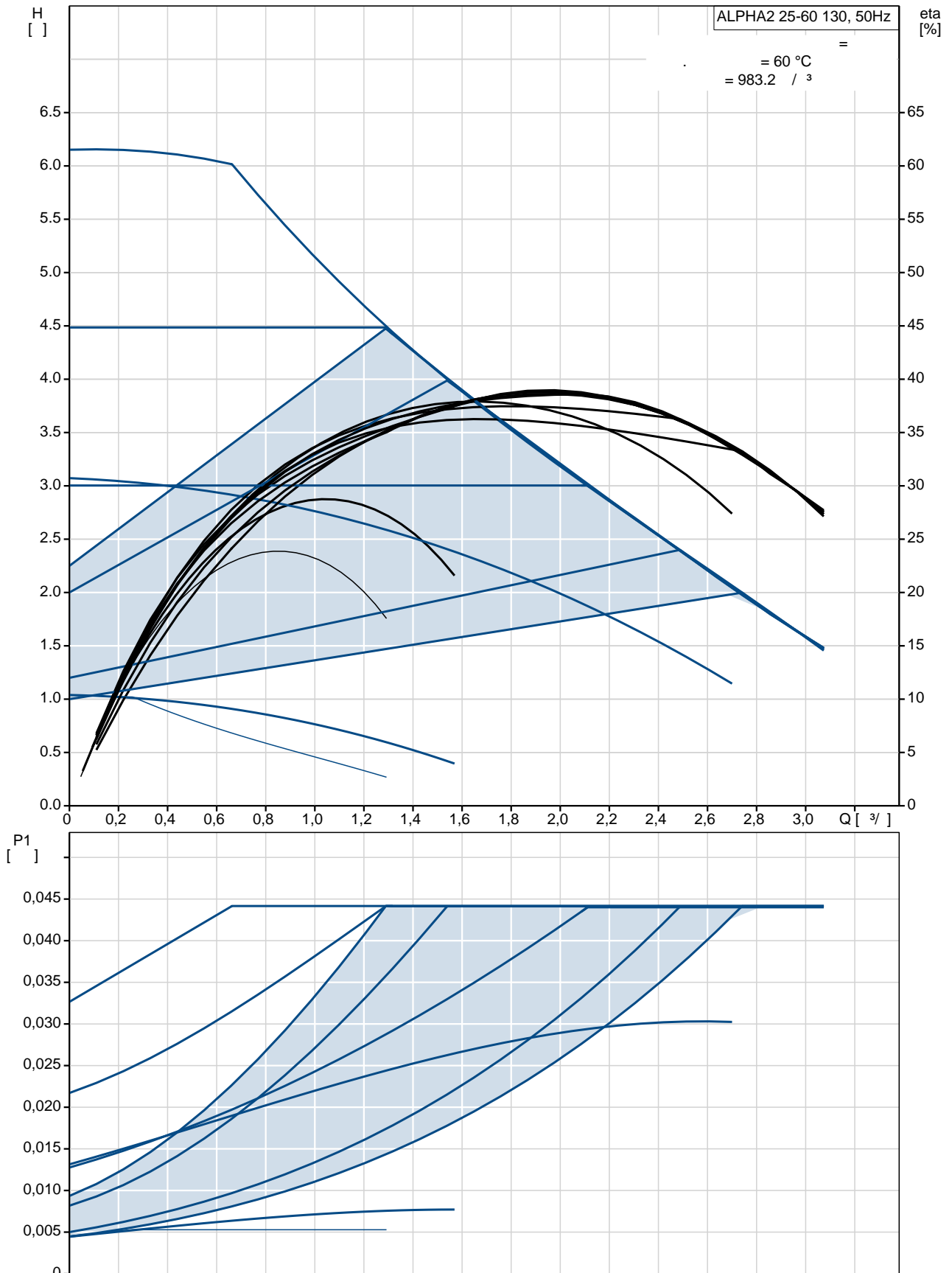
80

ALPHA

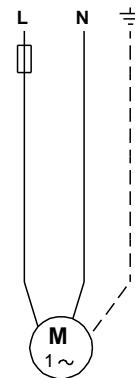
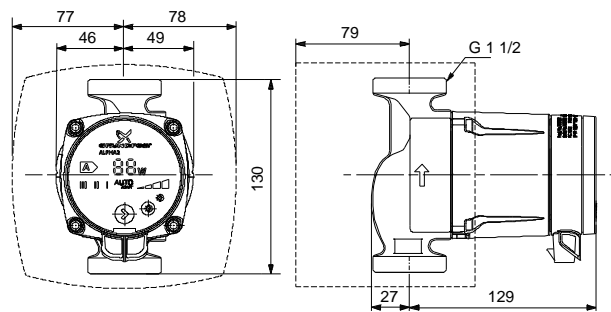
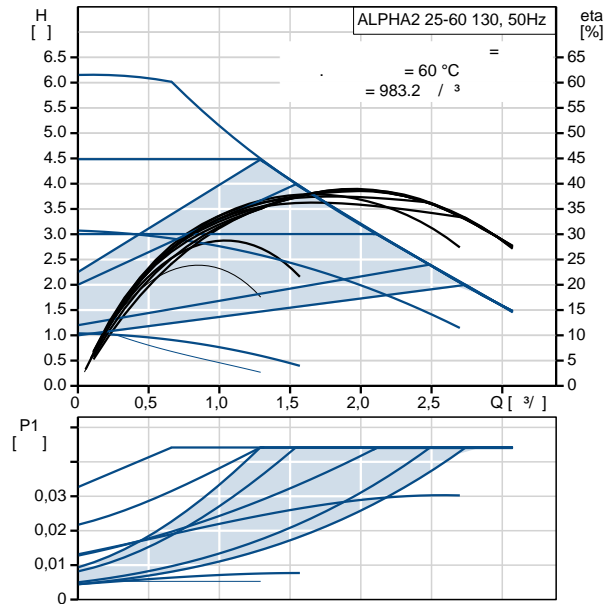
ALPHA

:
 : 2 .. 110 °C
 : 60 °C
 : 983.2 / ³
 :
 TF : 110
 : VDE,GS,CE
 :
 :
 : EN-JL 1020
 : ASTM A48-25 B
 : , PP
 :
 : 0 .. 40 °C
 : 10.2
 : G 1 1/2
 : PN 10
 : 130
 :
 : -P1: 5 .. 45
 : 50 Hz
 : 1 x 230 V
 : 0.05 .. 0.38 A
 (IEC 34-5): IP42
 (IEC 85): F
 :
 : (EEI): 0.23
 : 1.9
 : 2.1
 : 0.004 ³

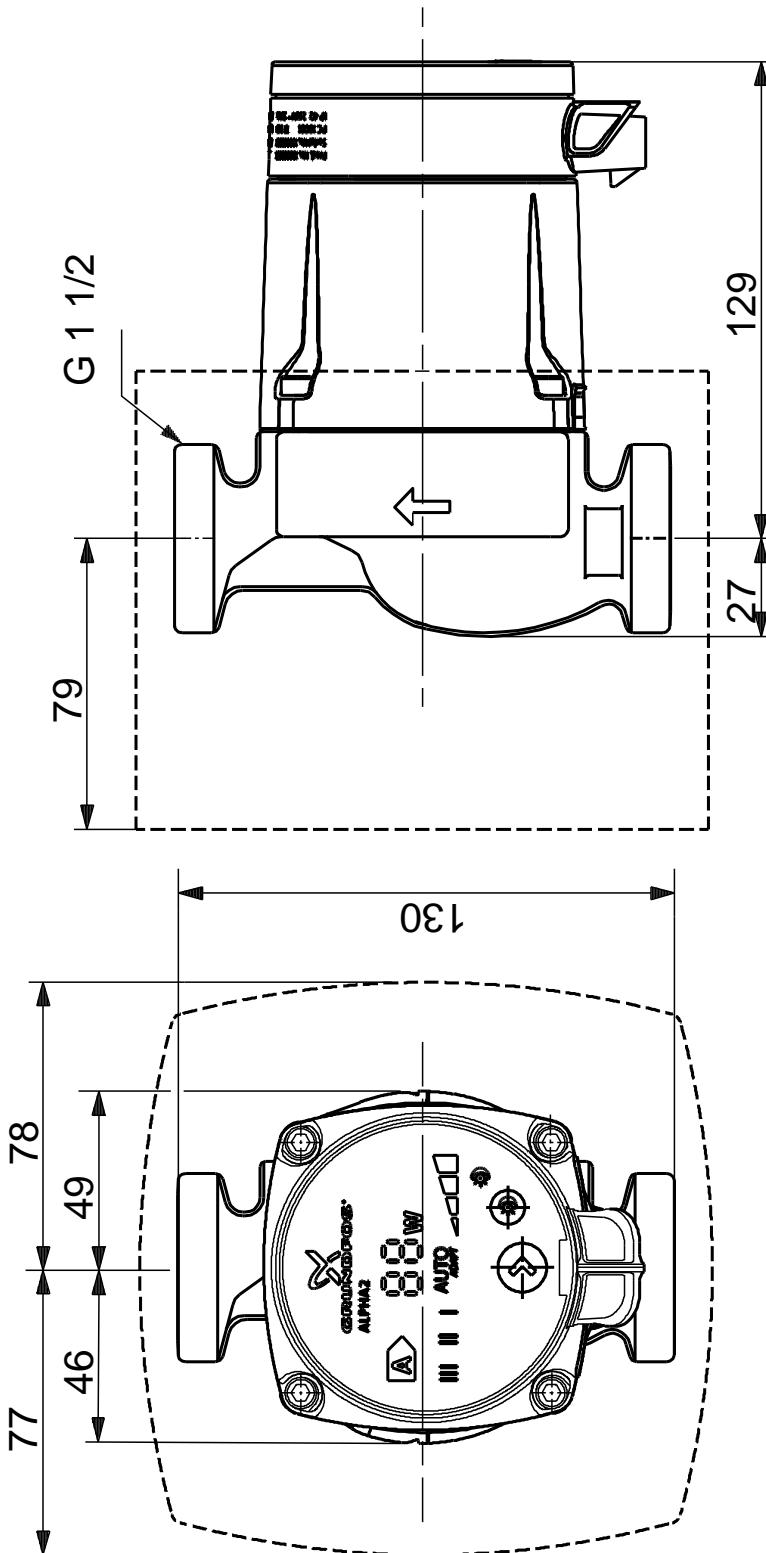
ALPHA2 25-60 130 50



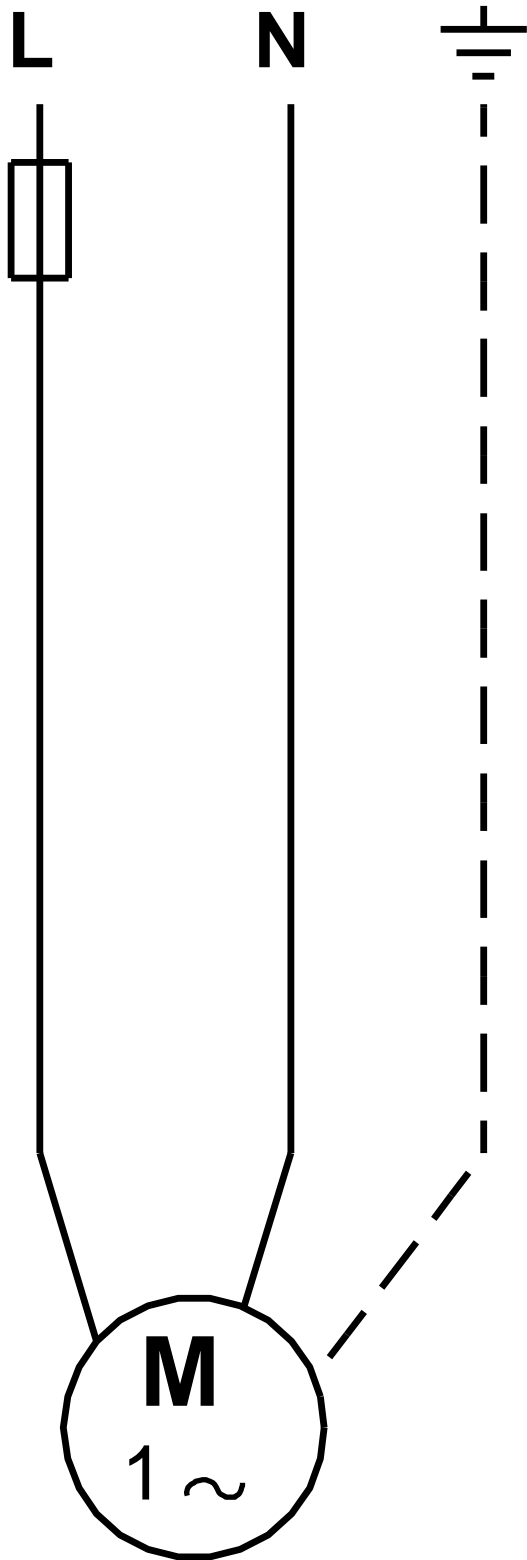
ALPHA2 25-60 130	
EAN	
TF	60 110 VDE,GS,CE
	EN-JL 1020 ASTM A48-25 B PP
	0 .. 40 °C
	10.2 G 1 1/2 PN 10 130
	2 .. 110 °C 60 °C 983.2 / ³
-P1:	5 .. 45 50 Hz 1 x 230 V 0.05 .. 0.38 A
(IEC 34-5):	IP42
(IEC 85):	F
	ELEC
	6H
(EEI):	0.23 1.9 2.1 0.004 ³



ALPHA2 25-60 130 50



ALPHA2 25-60 130 50



! [], .

: ALPHA2 25-60 130
1

- :

:

:

: