

1 **SQE 2-85**



: 96510153

3"

: 35 °C

0,15 / : 35 °C

: 20 °C

998.2 / ³

10700 /

2 ^{3/}

88

: CE,UL,CUL

- : ISO9906:2012 3B

Polyamide /

DIN W.-Nr. 1.4301

AISI 304

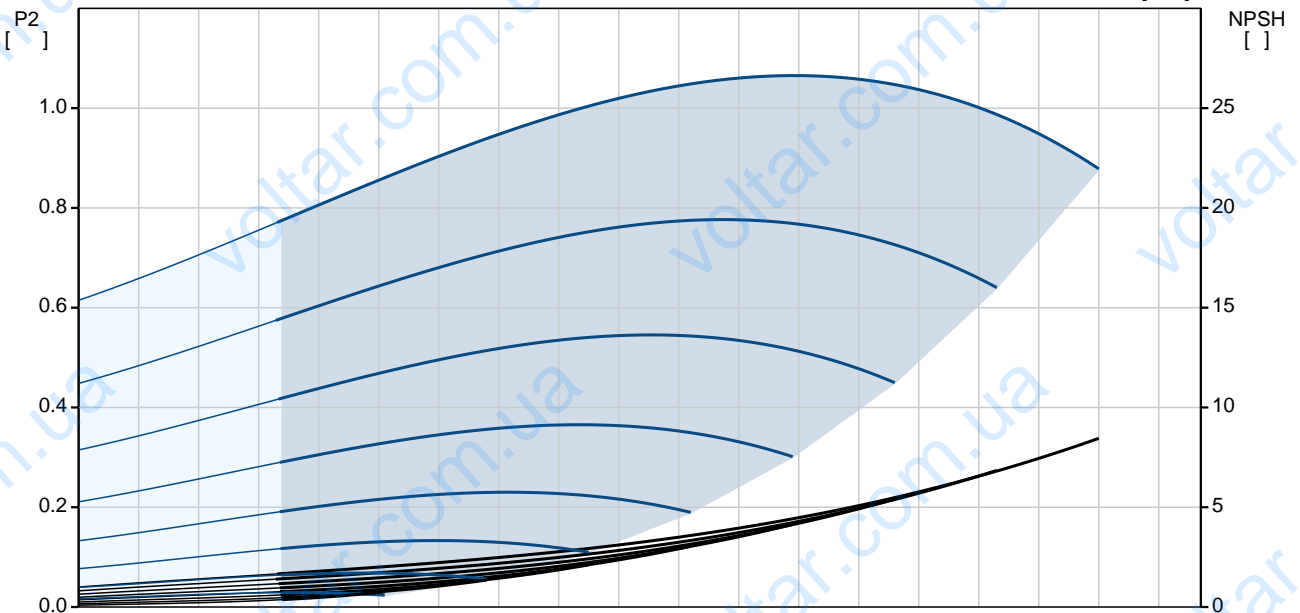
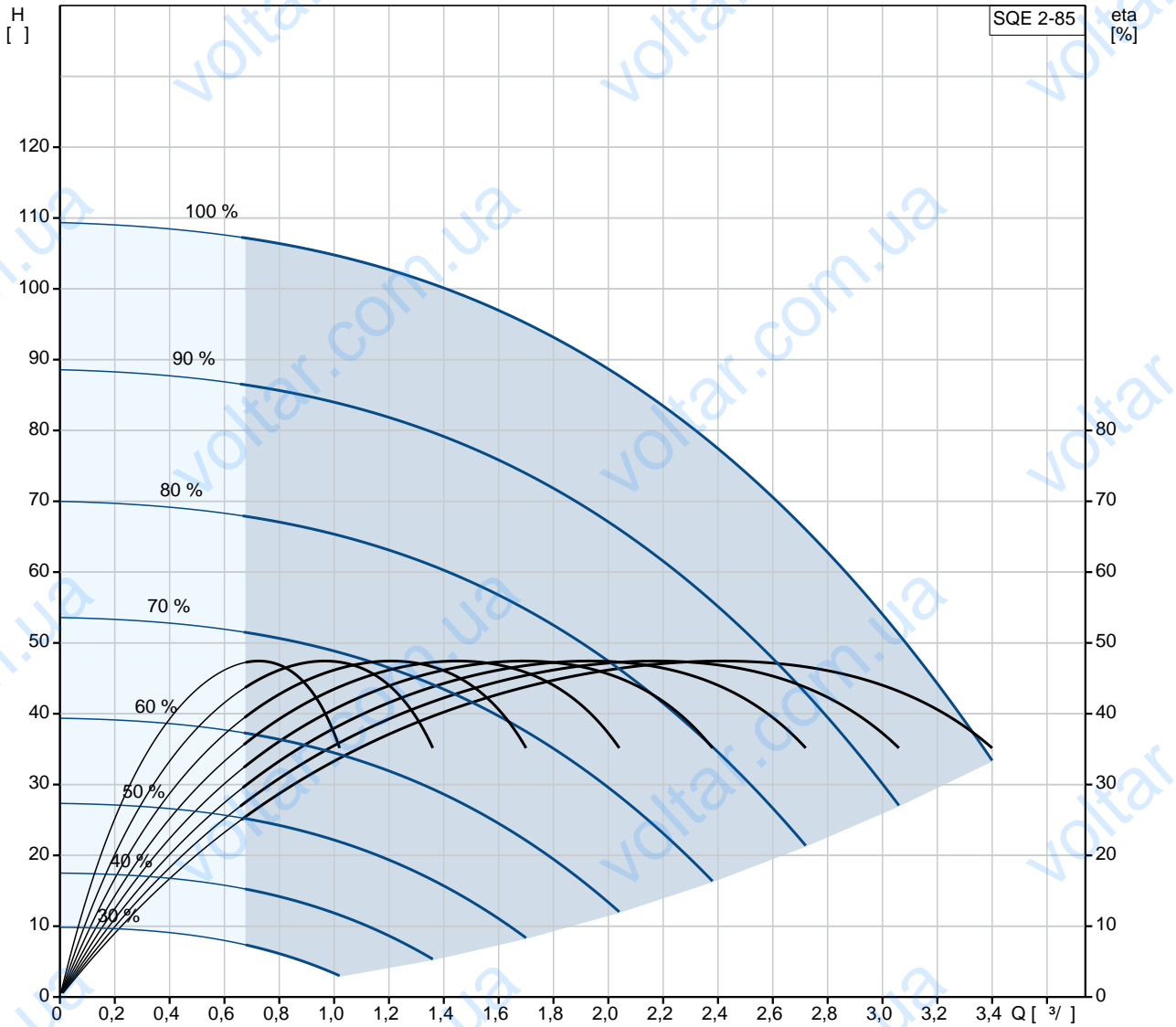
DIN W.-Nr. 1.4301

AISI 304



:
: Rp 1 1/4
: 76
:
: MSE3
- P1: 1.65
- P2: 1.15
: 50 Hz
: 1 x 200-240
: 8.4 A
: 1.00
: 10700 /
: (IEC 34-5): IP68
: (IEC 85): F
: 1.5
:
: 5.5
: 6.2
: 0.01 ³
Danish VVS No.: 388442485
Swedish RSK No.: 5853372
Finnish: LVI NO 4762532
Norwegian NRF no.: 9041353

96510153 SQE 2-85 50



SQE 2-85
 EAN : 96510153
 5700396502519

10700 /
 2 ³/
 88
 5
 : CE,UL,CUL
 - : ISO9906:2012 3B
 : 96080395
 : B

Polyamide /
 DIN W.-Nr. 1.4301
 AISI 304

DIN W.-Nr. 1.4301
 AISI 304

Rp 1 1/4
 76

. t 0,15 / : 35 °C
 : 35 °C
 : 20 °C
 : 998.2 / ³

: MSE3
 - P1: 1.65
 - P2: 1.15
 : 50 Hz
 : 1 x 200-240
 : 8.4 A
 : 1.00
 : 10700 /

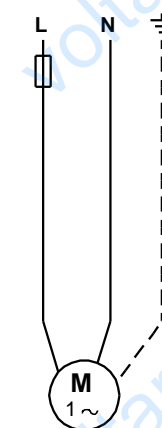
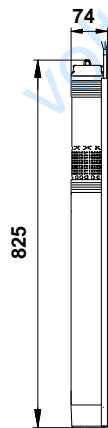
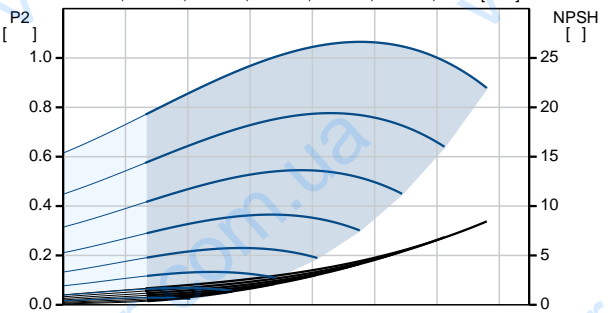
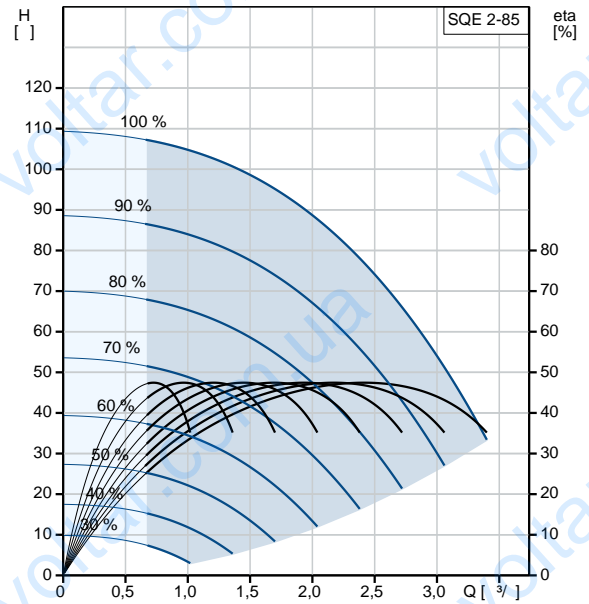
(IEC 34-5): IP68
 (IEC 85): F
 : Y

1.5
 96160855

CU 300/CU 301: CU

300/CU 301
 5.5
 6.2
 0.01 ³

EU/S-AMREG/APRE
 G





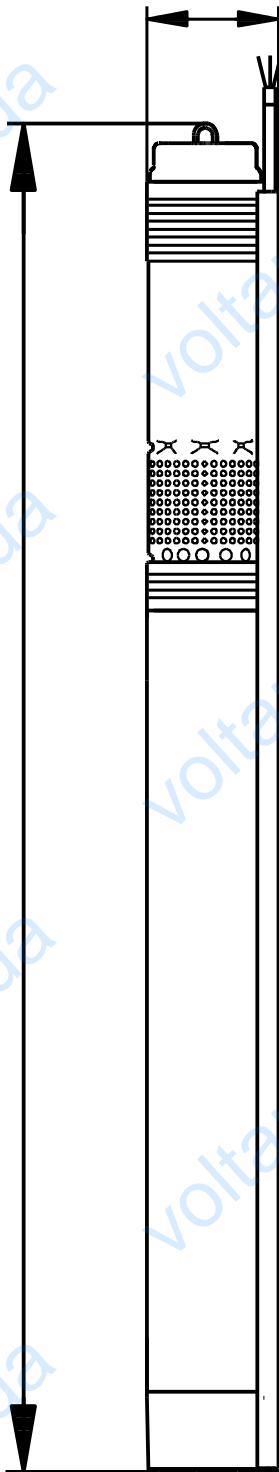
Danish VVS No.:	388442485
Swedish RSK No.:	5853372
Finnish:	LVI NO 4762532
Norwegian NRF no.:	9041353

GRUNDFOS 

96510153 SQE 2-85 50

74

825



96510153 SQE 2-85 50

