

1 **SQE 3-40**



: 96510157

3"

: 35 °C

0,15 / : 35 °C

: 20 °C

998.2 / ³

10700 /

3 ^{3/}

42

: CE,UL,CUL

- : ISO9906:2012 3B

Polyamide /

DIN W.-Nr. 1.4301

AISI 304

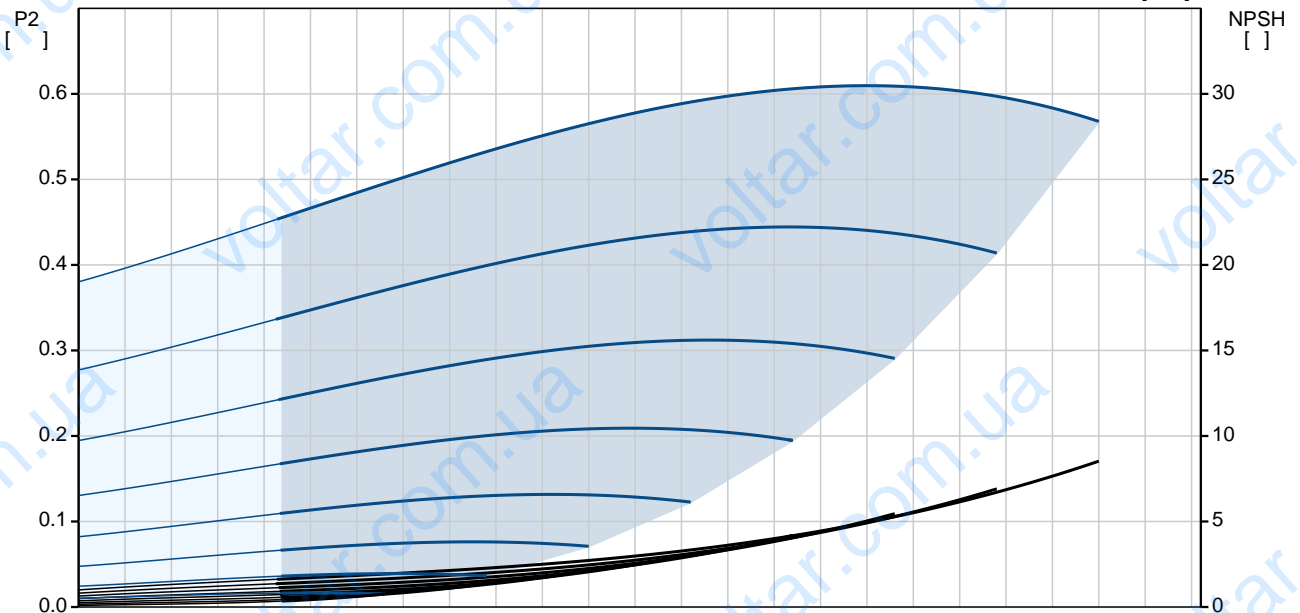
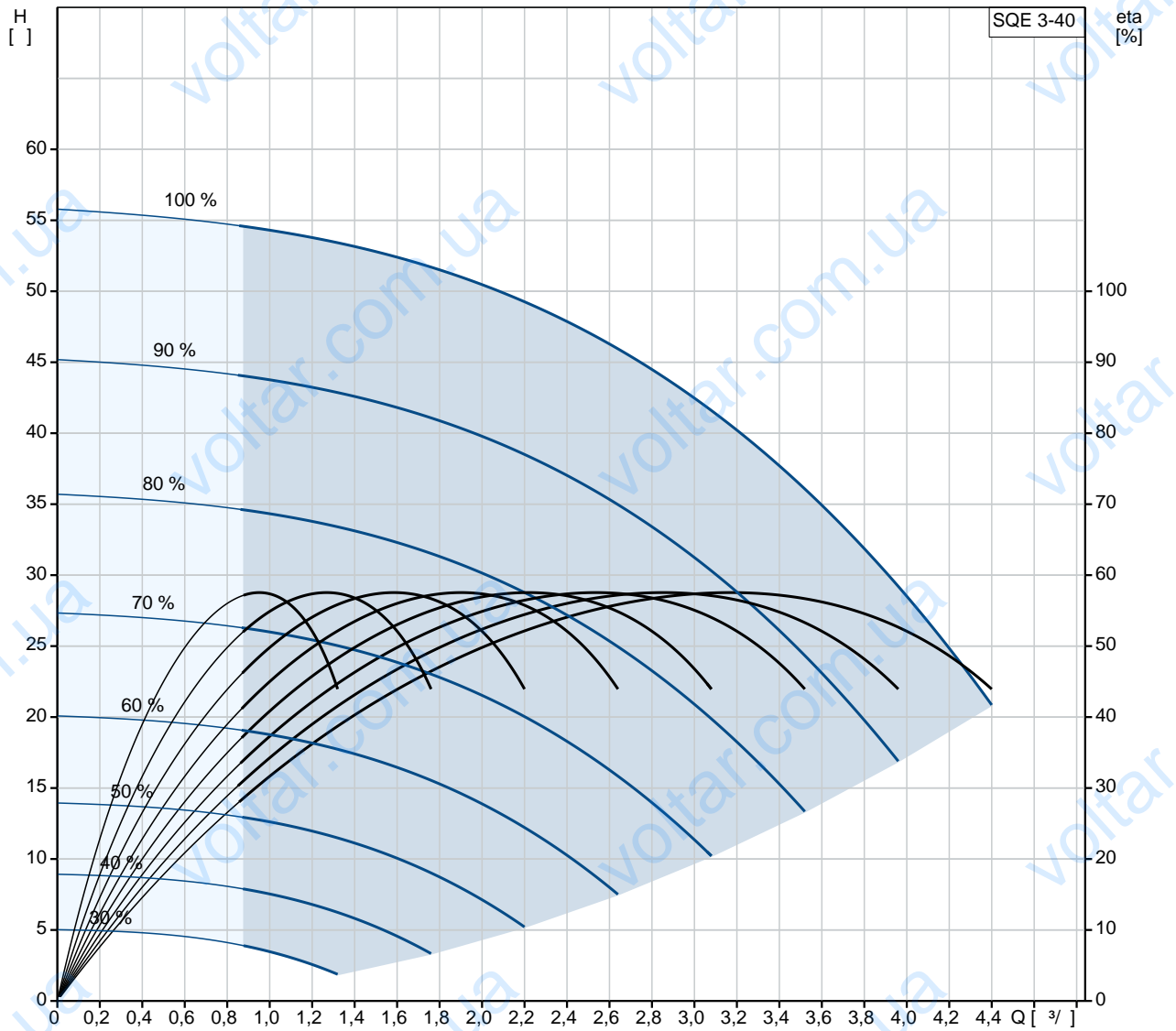
DIN W.-Nr. 1.4301

AISI 304



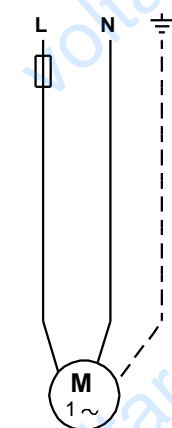
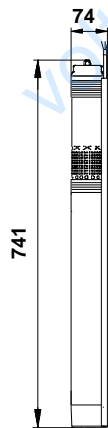
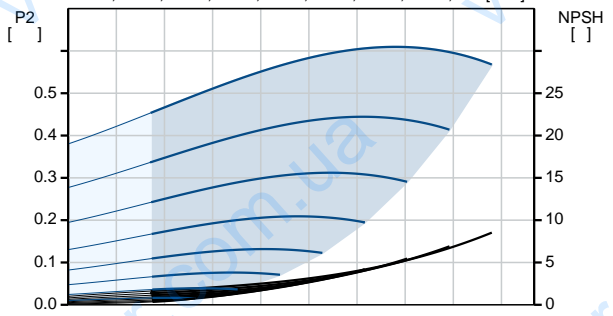
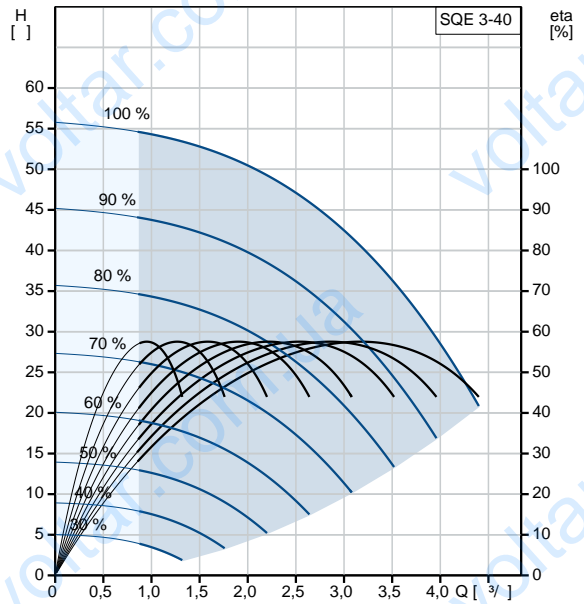
·
· Rp 1 1/4
· 76
·
· MSE3
· - P1: 1.02
· - P2: 0.7
· 50 Hz
· 1 x 200-240
· 5.2 A
· 1.00
· 10700 /
·
· (IEC 34-5): IP68
· (IEC 85): F
· 1.5
·
· 4.8
· 5.5
· 0.009 ³
Danish VVS No.: 388443440
Swedish RSK No.: 5853376

96510157 SQE 3-40 50



GRUNDFOS

			SQE 3-40
			96510157
EAN	:		5700396502557
			10700 /
			3 ³ /
			42
			3
			: CE,UL,CUL
			ISO9906:2012 3B
			96080387
			B
			Polyamide /
			DIN W.-Nr. 1.4301
			AISI 304
			DIN W.-Nr. 1.4301
			AISI 304
			Rp 1 1/4
			76
			35 °C
. t	0,15 /		35 °C
			20 °C
			998.2 / ³
			MSE3
		- P1:	1.02
		- P2:	0.7
			50 Hz
			1 x 200-240
			5.2 A
			1.00
			10700 /
		(IEC 34-5):	IP68
		(IEC 85):	F
			Y
			1.5
			96160854
CU 300/CU 301:			CU
			300/CU 301
			4.8
			5.5
			0.009 ³
			EU/S-AMREG/APRE
			G





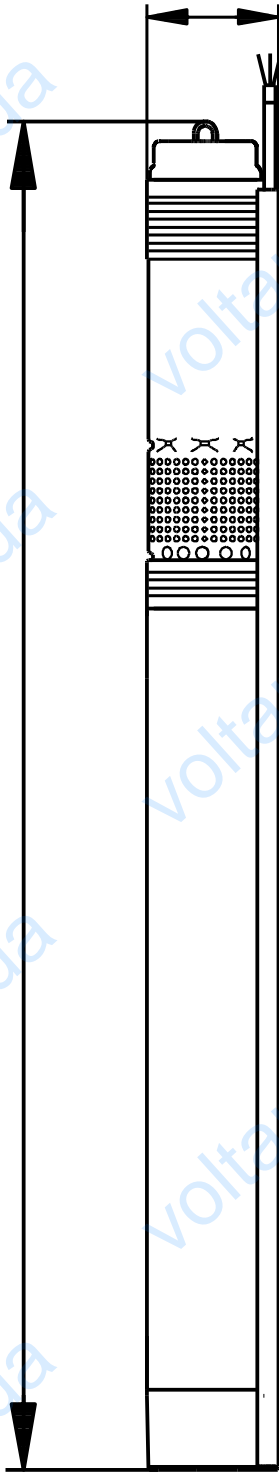
Danish VVS No.:	388443440
Swedish RSK No.:	5853376

GRUNDFOS 

96510157 SQE 3-40 50

74

741



96510157 SQE 3-40 50

