

1 **SQE 3-105**



: 96510162

3"

: 35 °C

0,15 / : 35 °C

: 20 °C

998.2 / ³

10700 /

3 ^{3/}

113

: CE,UL,CUL

- : ISO9906:2012 3B

Polyamide /

DIN W.-Nr. 1.4301

AISI 304

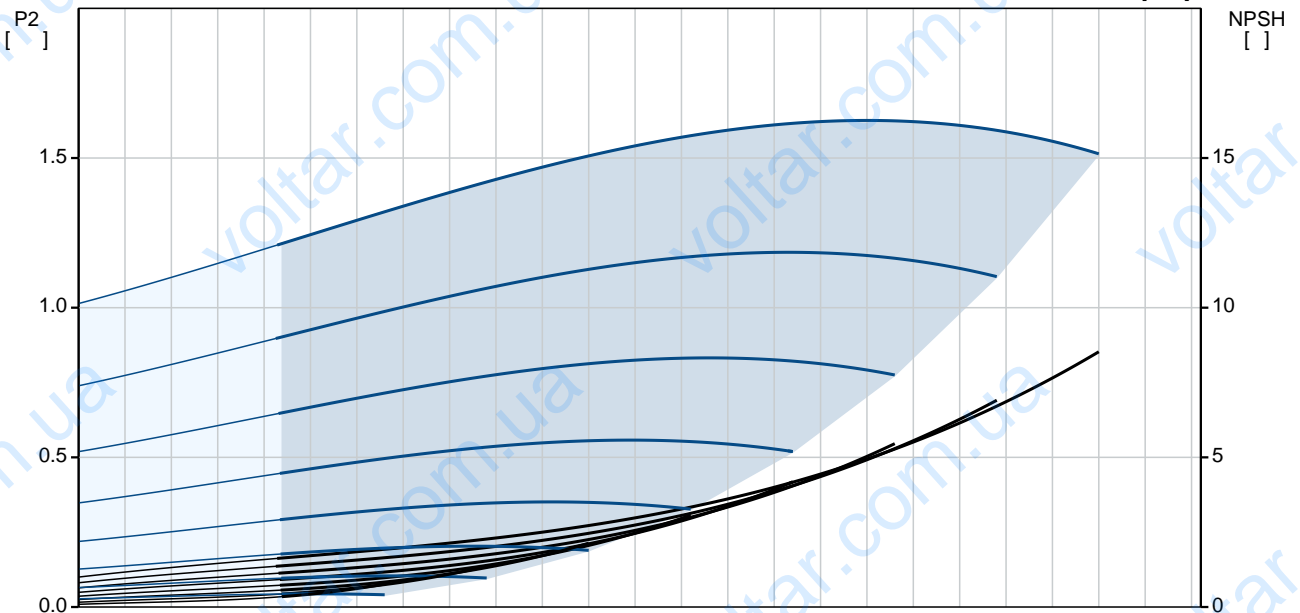
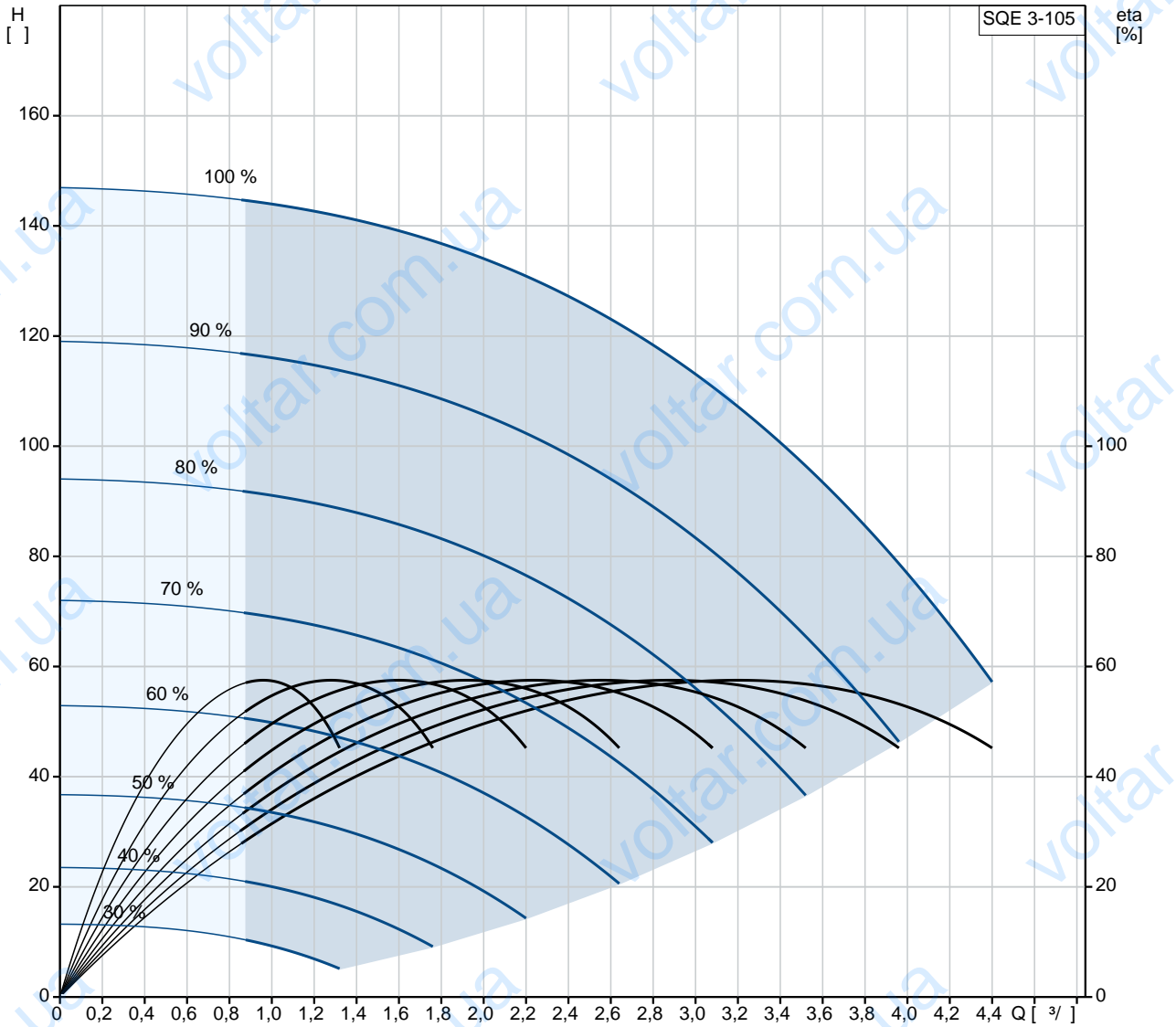
DIN W.-Nr. 1.4301

AISI 304

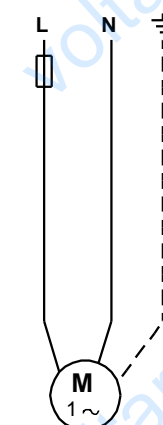
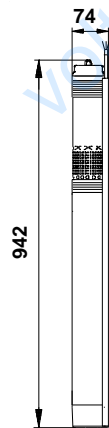
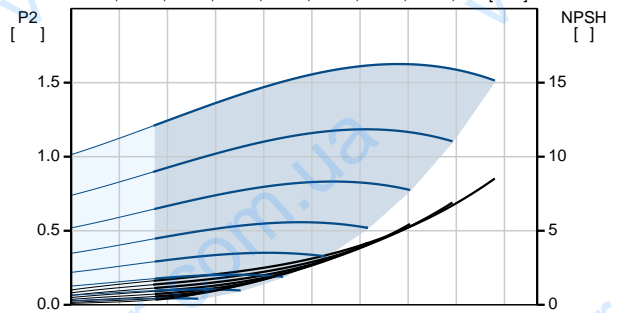
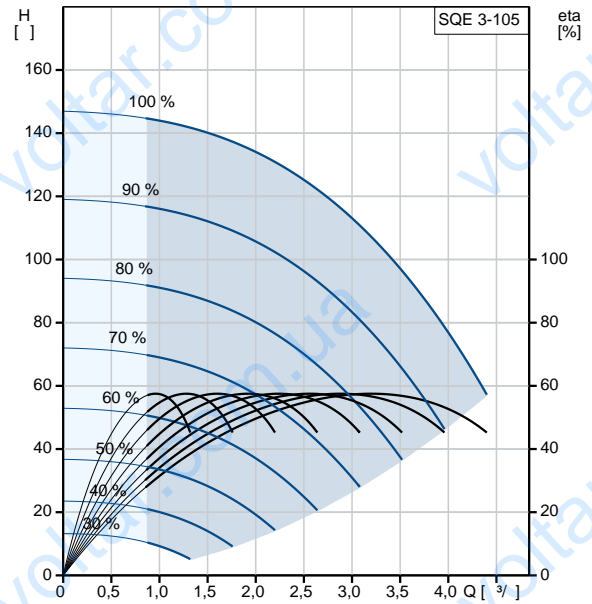


·
·
Rp 1 1/4
· 76
·
· MSE3
- P1: 2.54
- P2: 1.85
· 50 Hz
· 1 x 200-240
· 12.3 A
· 1.00
· 10700 /
·
(IEC 34-5): IP68
(IEC 85): F
· 1.5
·
· 6.5
· 7.1
·
· 0.011 ³
Danish VVS No.: 388443505
Swedish RSK No.: 5853381

96510162 SQE 3-105 50



| | | |
|----------------|-------------|----------------------|
| | | SQE 3-105 |
| | | 96510162 |
| EAN | | 5700396502601 |
| | | 10700 / |
| | | 3 ³ / |
| | | 113 |
| | | 8 |
| | | : CE,UL,CUL |
| | | ISO9906:2012 3B |
| | | 96080410 |
| | | B |
| | | Polyamide / |
| | | DIN W.-Nr. 1.4301 |
| | | AISI 304 |
| | | DIN W.-Nr. 1.4301 |
| | | AISI 304 |
| | | Rp 1 1/4 |
| | | 76 |
| | | 35 °C |
| . t | 0,15 / | 35 °C |
| | | 20 °C |
| | | 998.2 / ³ |
| | | MSE3 |
| | - P1: | 2.54 |
| | - P2: | 1.85 |
| | | 50 Hz |
| | | 1 x 200-240 |
| | | 12.3 A |
| | | 1.00 |
| | | 10700 / |
| | (IEC 34-5): | IP68 |
| | (IEC 85): | F |
| | | Y |
| | | 1.5 |
| | | 96160857 |
| CU 300/CU 301: | | CU |
| | | 300/CU 301 |
| | | 6.5 |
| | | 7.1 |
| | | 0.011 ³ |
| | | EU/S-AMREG/APRE |
| | | G |





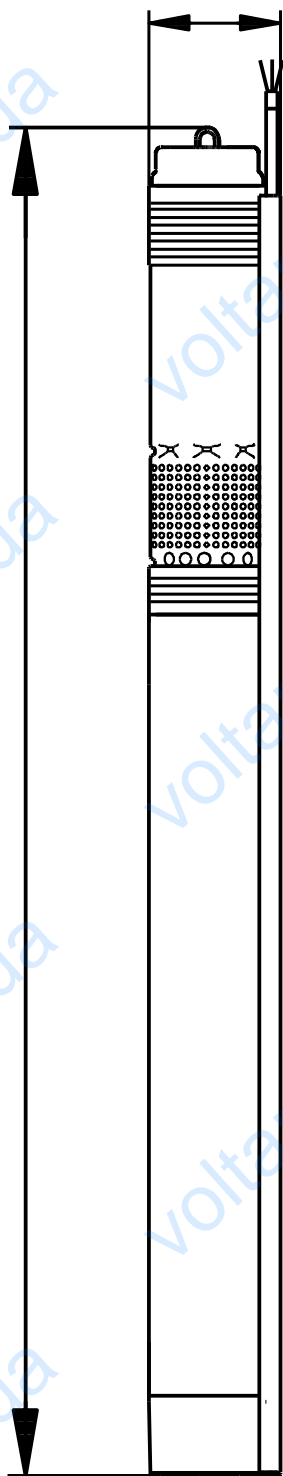
| | |
|------------------|-----------|
| Danish VVS No.: | 388443505 |
| Swedish RSK No.: | 5853381 |

GRUNDFOS 

96510162 SQE 3-105 50

74

942



96510162 SQE 3-105 50

