

1 **SQE 5-70**



: 96510168

3"

: 35 °C

0,15 / : 35 °C

: 20 °C

998.2 / <sup>3</sup>

10700 /

5 <sup>3/</sup>

73

: CE,UL,CUL

- : ISO9906:2012 3B

Polyamide /

DIN W.-Nr. 1.4301

AISI 304

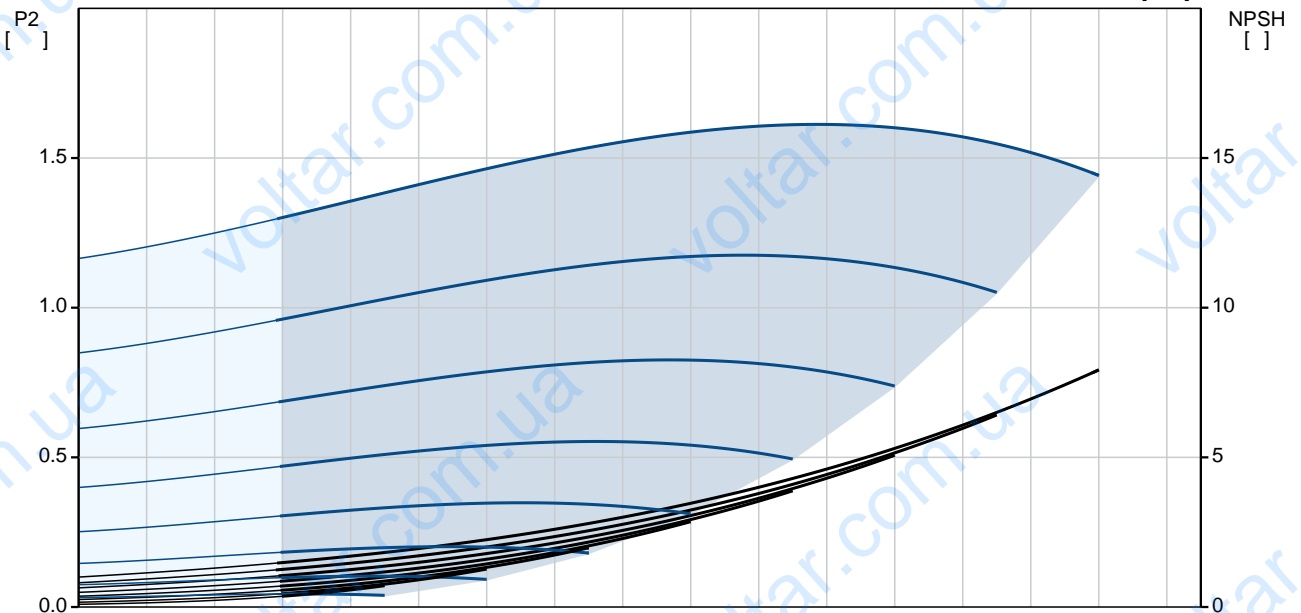
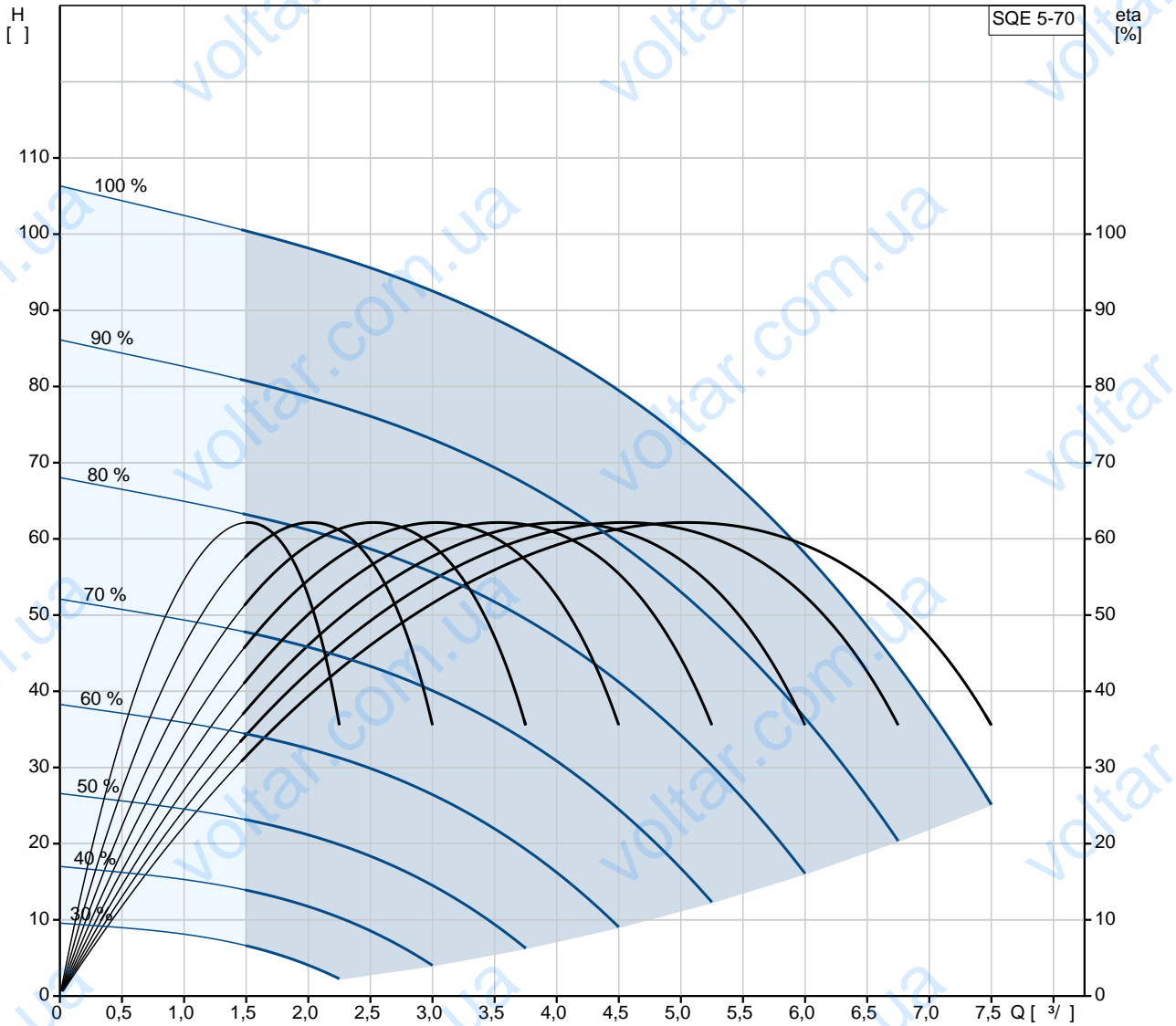
DIN W.-Nr. 1.4301

AISI 304

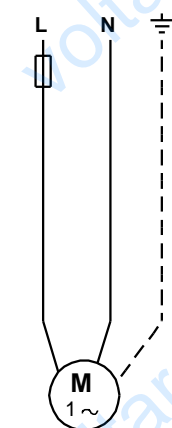
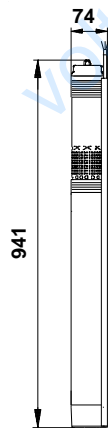
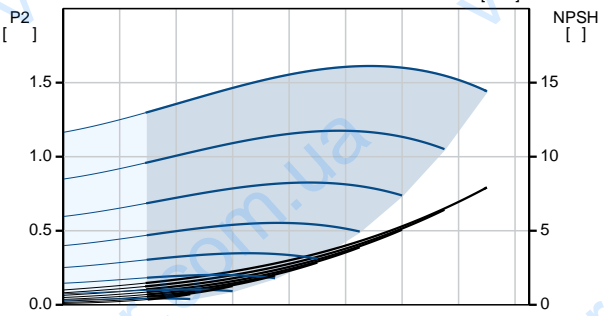
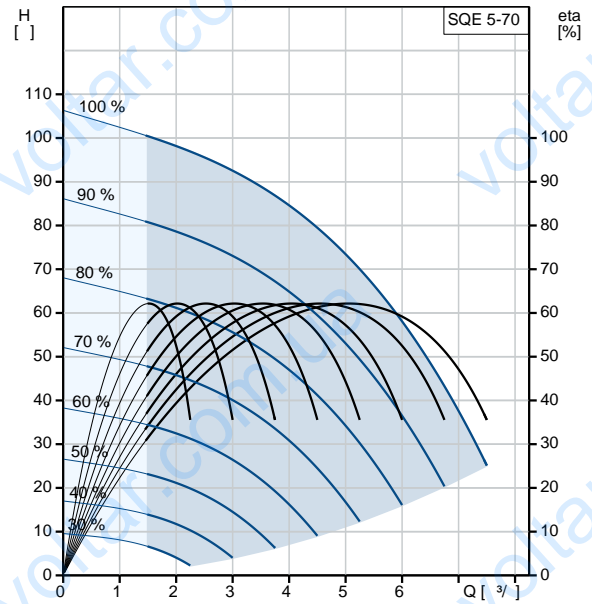
·  
·  
Rp 1 1/2  
· 76  
·  
· MSE3  
- P1: 2.54  
- P2: 1.85  
· 50 Hz  
· 1 x 200-240  
· 12.3 A  
· 1.00  
· 10700 /  
·  
(IEC 34-5): IP68  
(IEC 85): F  
· 1.5  
·  
· 6.4  
· 7.1  
· 0.011 <sup>3</sup>  
Danish VVS No.: 388445470  
Swedish RSK No.: 5853387



# 96510168 SQE 5-70 50



Model	SQE 5-70
EAN	96510168 5700396502762
Capacity	10700 / 5 <sup>3</sup> / 73 6
Material	CE,UL,CUL ISO9906:2012 3B 96080412 B
Material	Polyamide / DIN W.-Nr. 1.4301 AISI 304
Material	DIN W.-Nr. 1.4301 AISI 304
Material	Rp 1 1/2 76
Temperature	35 °C 35 °C 20 °C 998.2 / <sup>3</sup>
Motor	MSE3 - P1: 2.54 - P2: 1.85 50 Hz 1 x 200-240 12.3 A 1.00 10700 /
Protection	(IEC 34-5): IP68 (IEC 85): F Y
Efficiency	1.5 96160857
CU 300/CU 301:	CU 300/CU 301 6.4 7.1 0.011 <sup>3</sup> EU/S-AMREG/APRE G





---

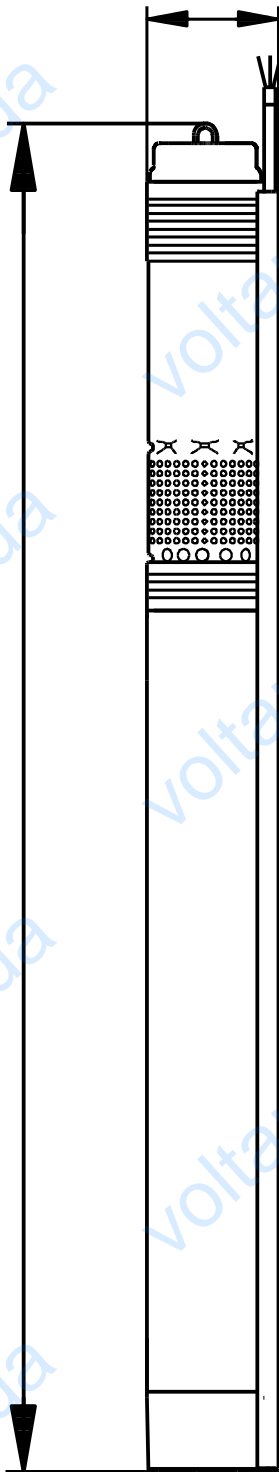
Danish VVS No.:	388445470
Swedish RSK No.:	5853387

**GRUNDFOS** 

96510168 SQE 5-70 50

74

941



96510168 SQE 5-70 50

